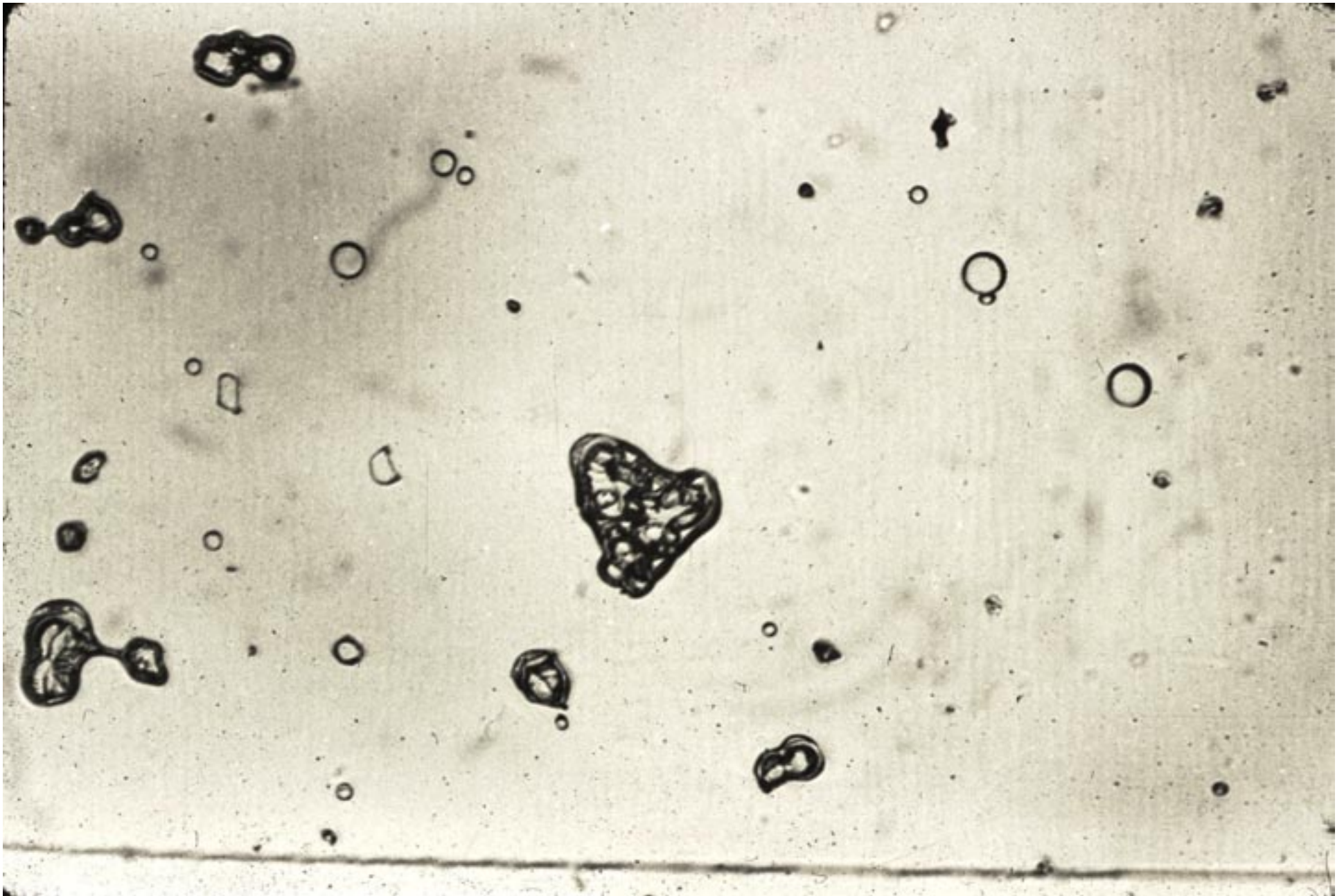


**NATURAL ICE PARTICLES AND SUPERCOOLED DROPS IN CLOUDS
OVER THE CASCADE MOUNTAINS PRIOR TO SEEDING**



**NATURAL ICE PARTICLES AND SUPERCOOLED DROPS IN CLOUDS
OVER THE CASCADE MOUNTAINS PRIOR TO SEEDING**